

A photograph of a quarry or construction site. In the background, there are large, terraced hills of yellowish-brown earth and rock. In the foreground, there are piles of rocks and a dirt road. A large red 'X' is superimposed over the image, and the words 'VULCAN QUARRY' are written in bold black letters across the center.

**VULCAN
QUARRY**

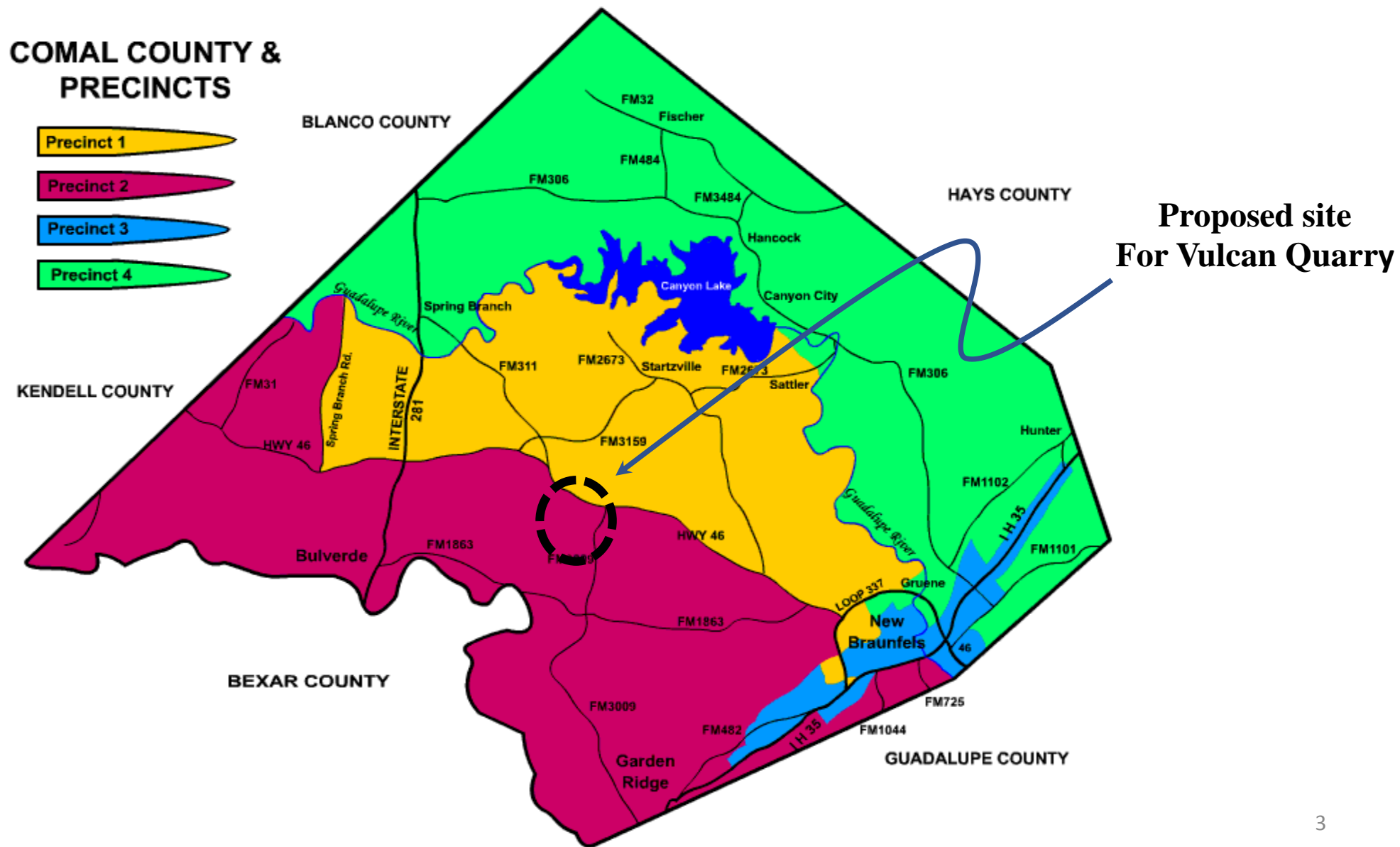
Who Is Affected?

ALL OF US....

Our Air Quality
(vis a vis our long-term health)
Our Water Quality and Availability
Our Property Values
Our Traffic & Our Roads

Say So Long to our Beloved Hill Country As You Know It!

FOR THE NEXT 80 YEARS!





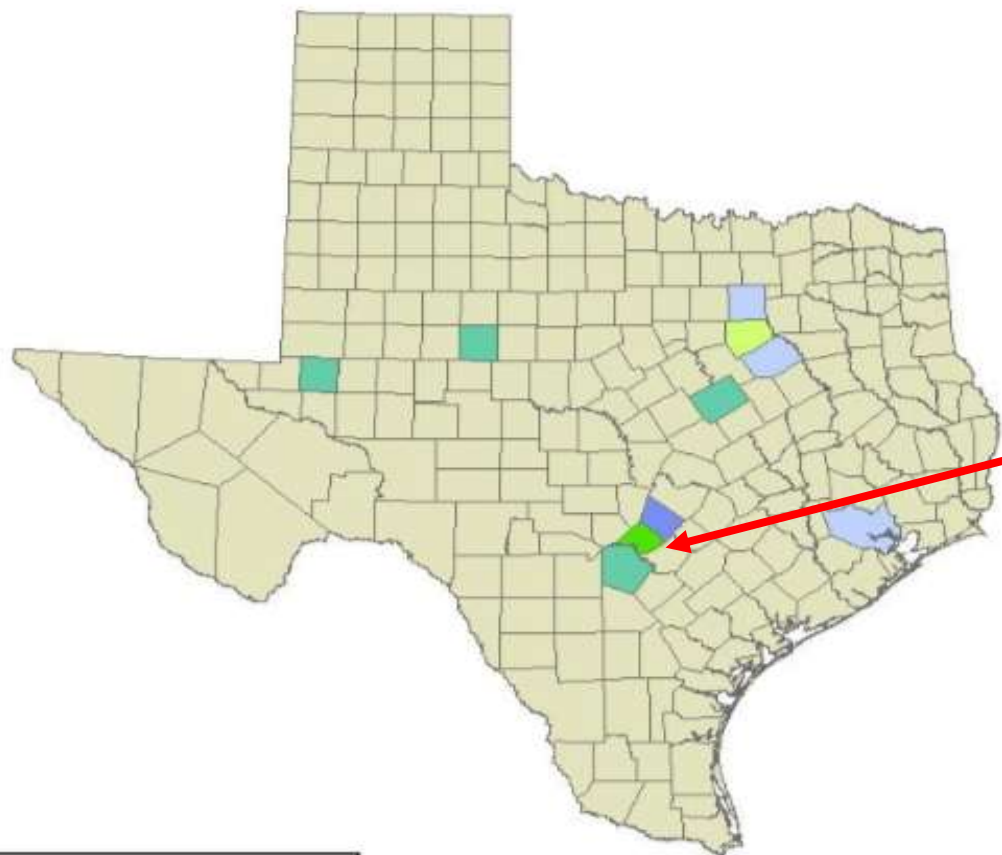
This is the site they hope to place that Rock Crushing Plant

Limestone Quarrying Produces Harmful Airborne Dust Particles & Pollution

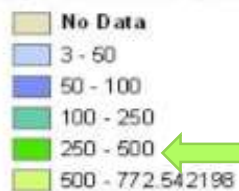




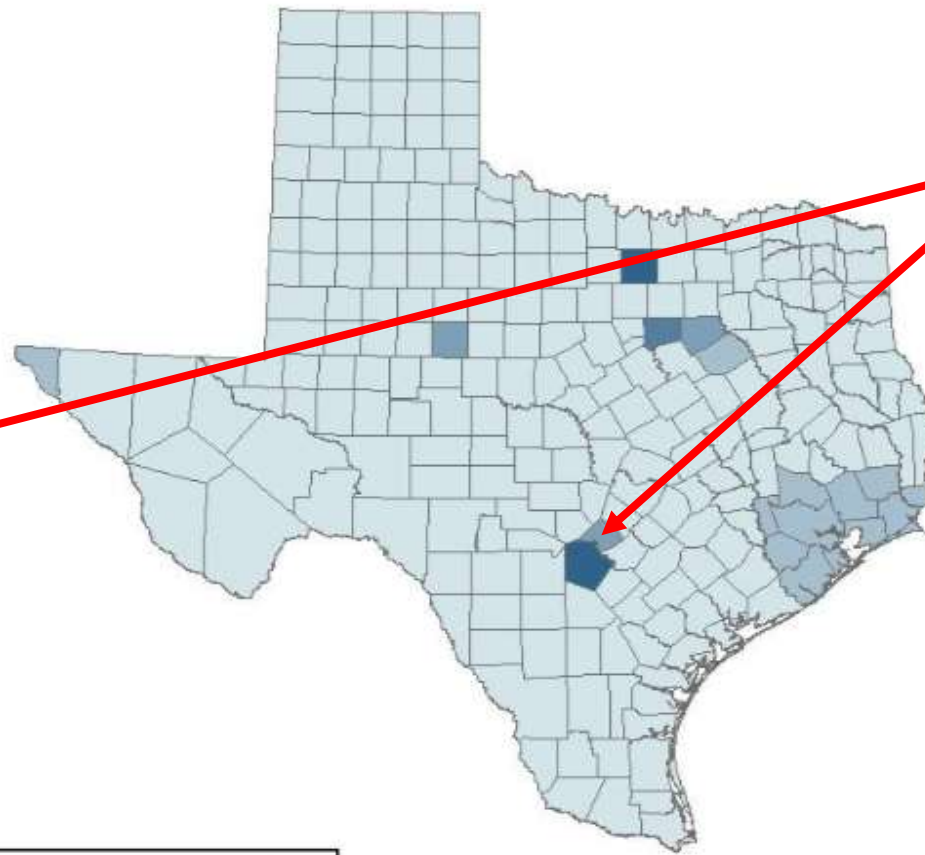
PM10 Mass Emission Rate by County for Mineral Products: Cement Manufacturing



County Emissions (tons/yr)

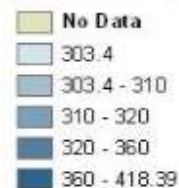


PM10 Mass Emission Rate by County for Mineral Products: Stone Quarrying



Comal Co.

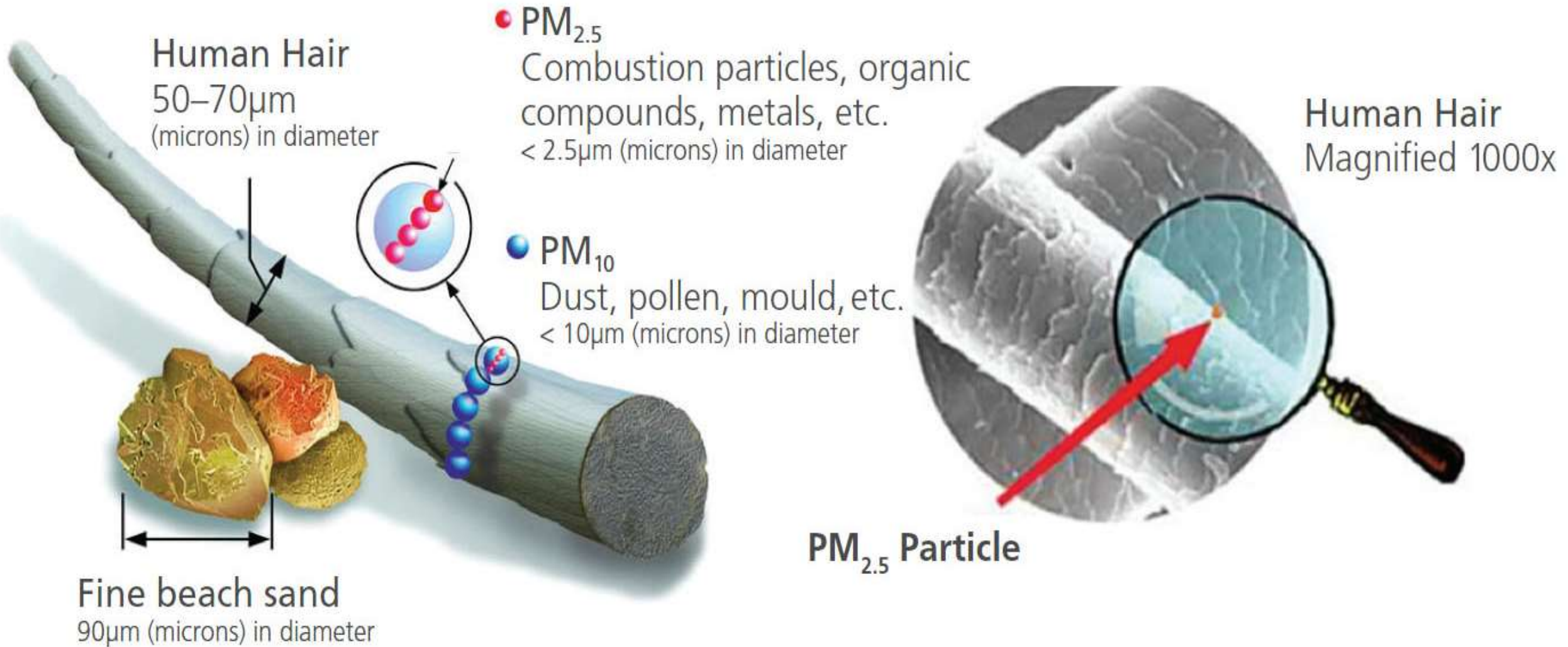
County Emissions (tons/yr)



Texas PM Emissions Atlas
Based on values reported in the 2002 NEI



Quarrying Operations Produce Invisible Pollutants



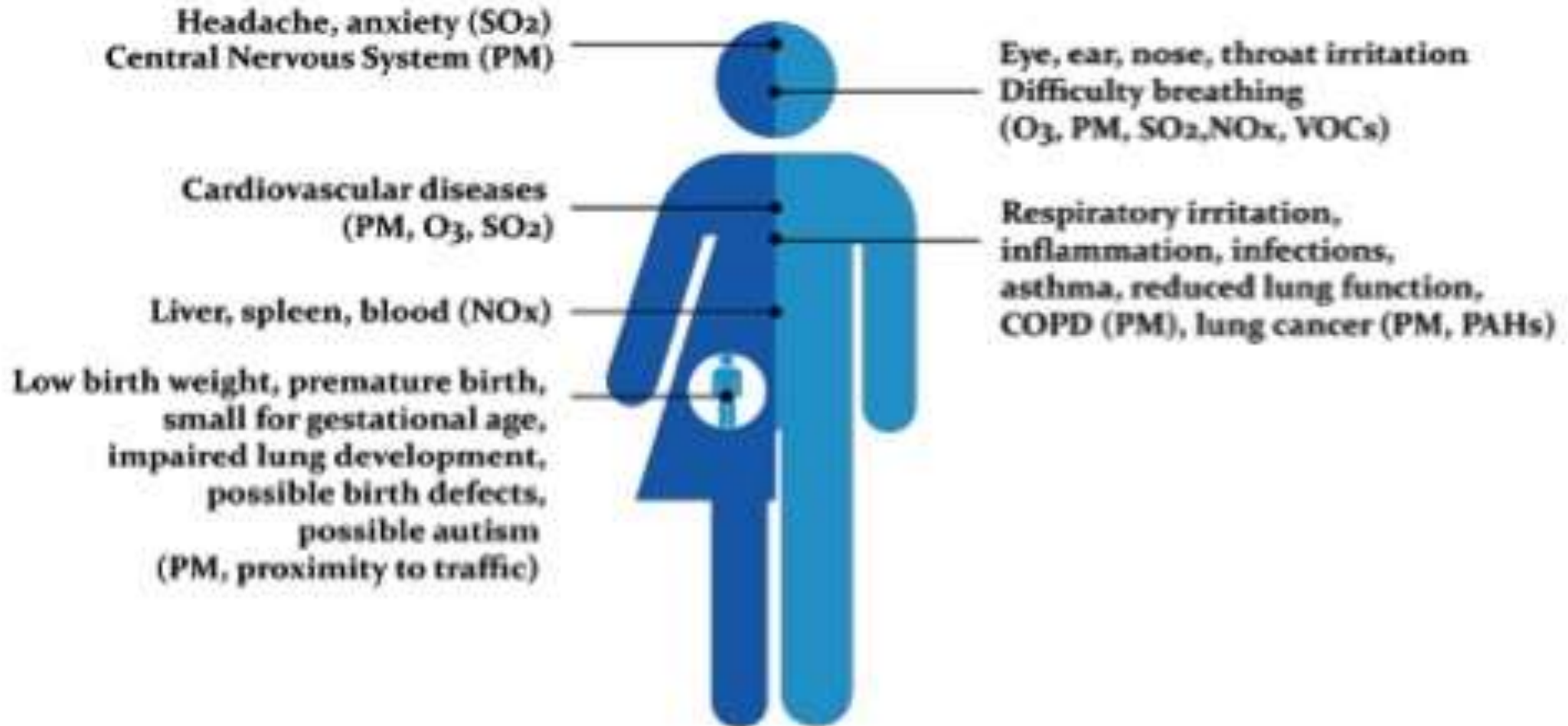
Environmental Exposure to PM_{2.5} and PM₁₀ has been extensively studied

Health risks are proportional to exposure (proximity and time).

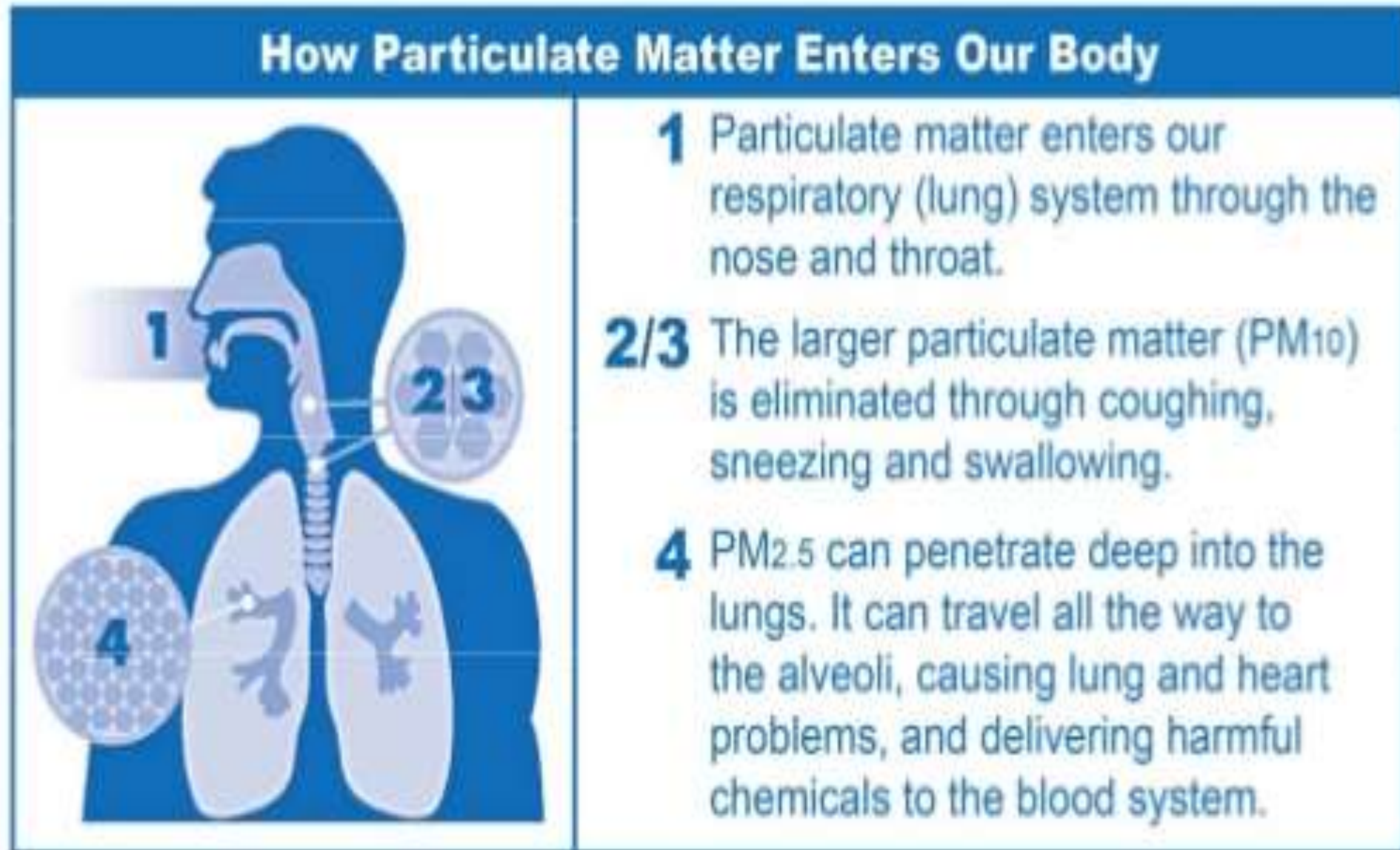
- **Long term quarry workers have highest risk.**
- **Significant health risks for individuals living close to quarry operations**

PM2.5 and PM10 Health Risks

Health Effects of Air Pollution



Physiology of PM 2.5 Inhalation



How and Where is Water Used In a Quarry?

- Dust Suppression

- Crusher – the only location that TCEQ is concerned about regarding dust and PM
- Excludes Conveyers, Stock Piles, Unpaved Internal Roadways

TECQ DOES NOT CONCERN ITSELF WITH WATER USAGE!

EAA, the County, nor our current Groundwater District can control the water usage!

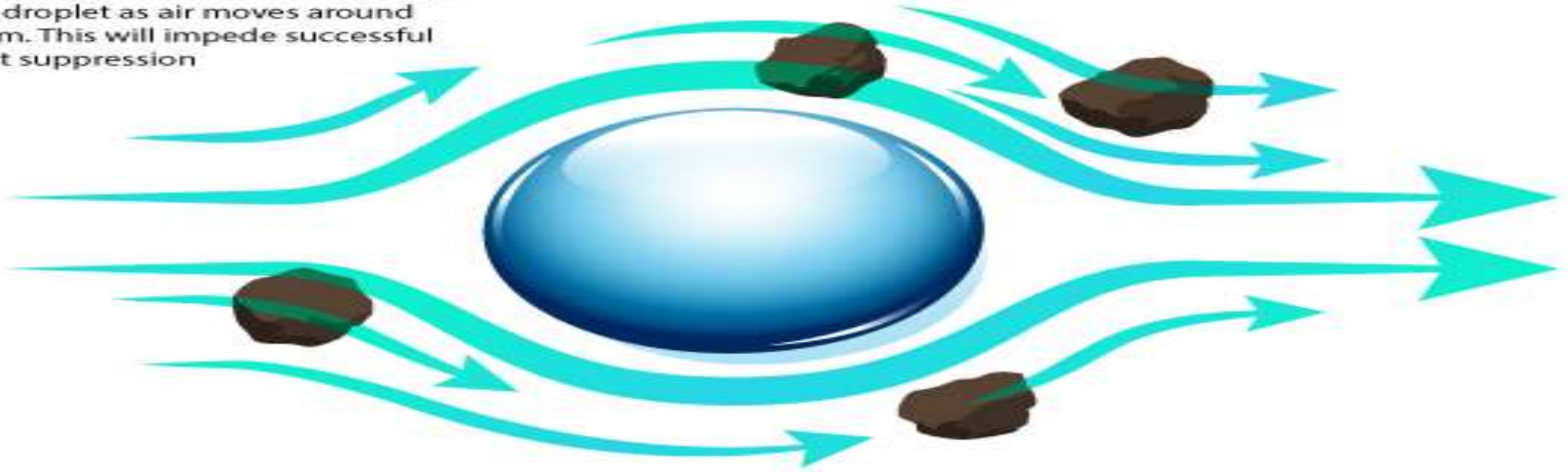
- How much more water is used during drought?
- How much more water is used during 100 degree days? (“Natures Cut” from evaporation of 23% and of that water that is left there is surfactants to recycle in a water plant is necessary but not provided, so left with 50% of starter values)
- What happens when they pump dry the water wells of their neighbors?
- What happens when Vulcan doesn’t have enough water for sufficient dust suppression?
 - More dust that is only measured at the crusher – no where else!
 - More track out onto roads
 - No dust cloud is measured or tracked via monitors beyond the fence line

Science and Effect of Water for Dust Control

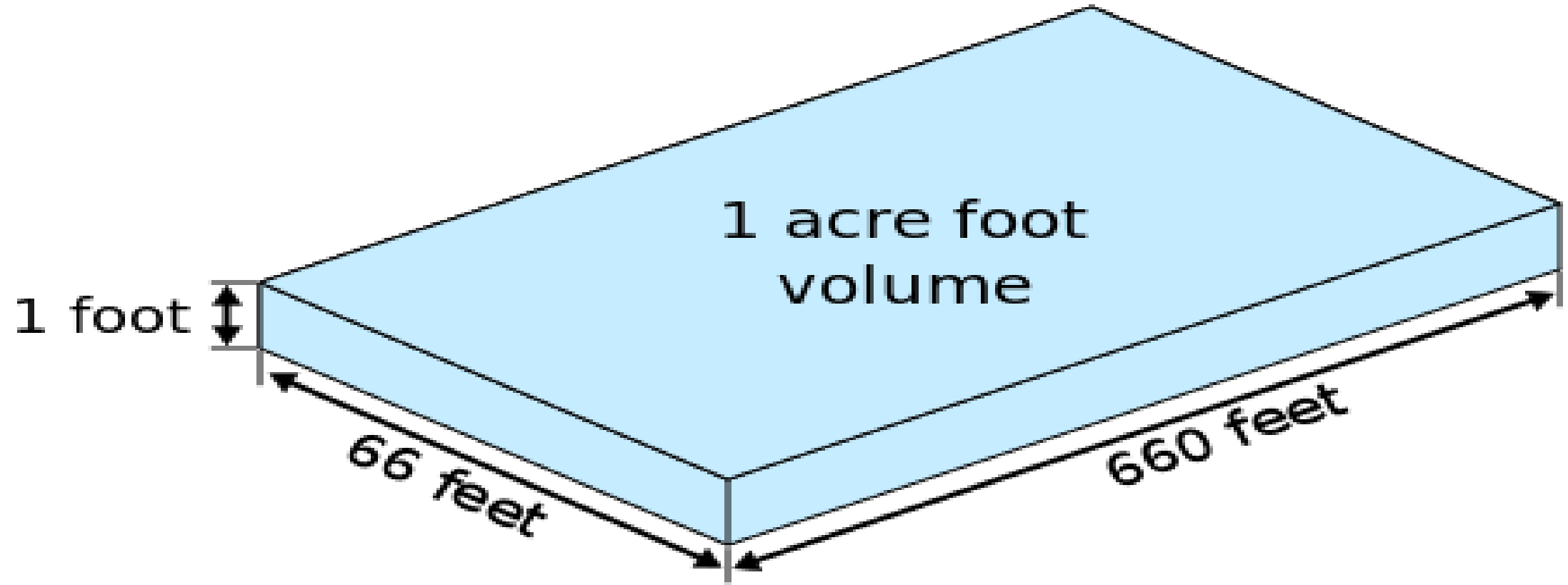
If droplets are similarly in size to the suppressing droplets they will collide with them and dust suppression will be more successful



If droplets are too big then dust particles will tend to move around the droplet as air moves around them. This will impede successful dust suppression



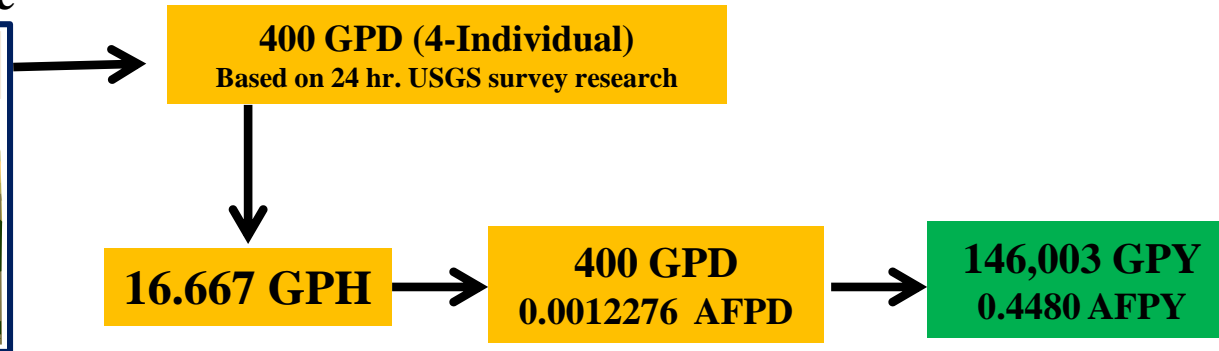
Understanding Water Measurements



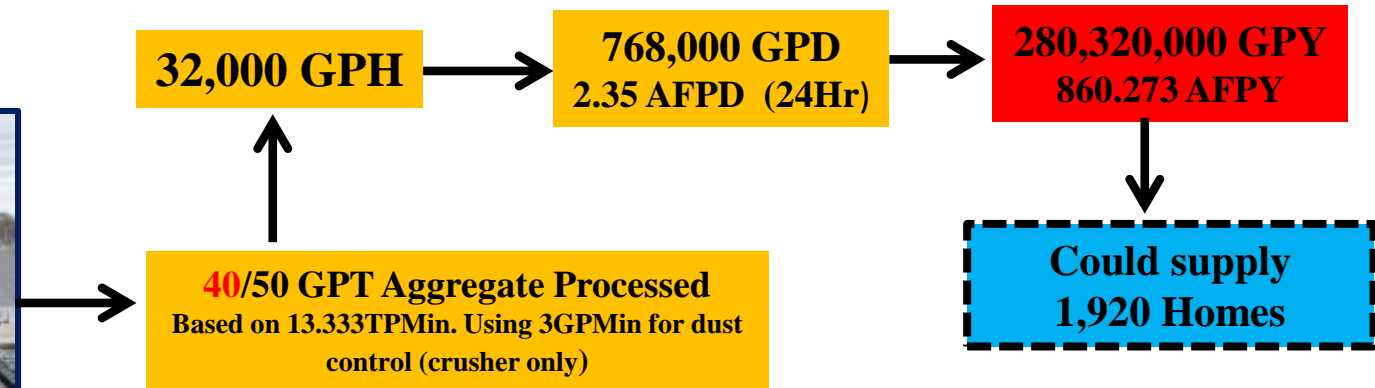
- 1-acre foot = 43,560 Cubic Feet = 325,850 US Gallons /22,000 gallon swimming pool = 14.79 swimming pools
- Average family of 4 Uses 400 Gallons per Day (Home)
- One Acre Foot Would Supply Water to 2.23 Homes Annually
- 800 TPY crusher uses 280,320,000 Gallons per Year or 5,714 swimming pools

Total Annual Water Consumption 4 Person Residence Vs. 800TPH Crusher

Family of 4 residence

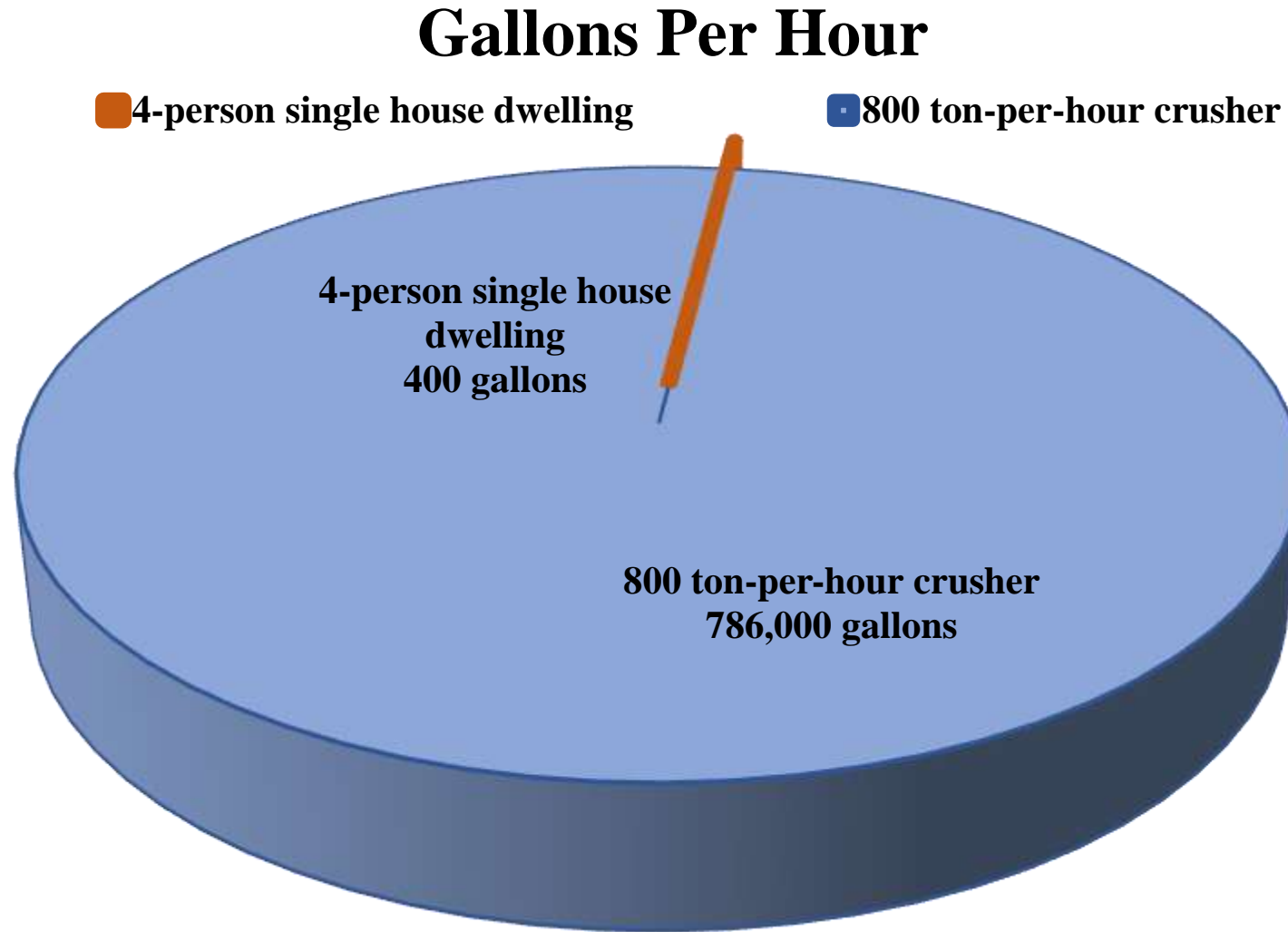


800 TPH Plant



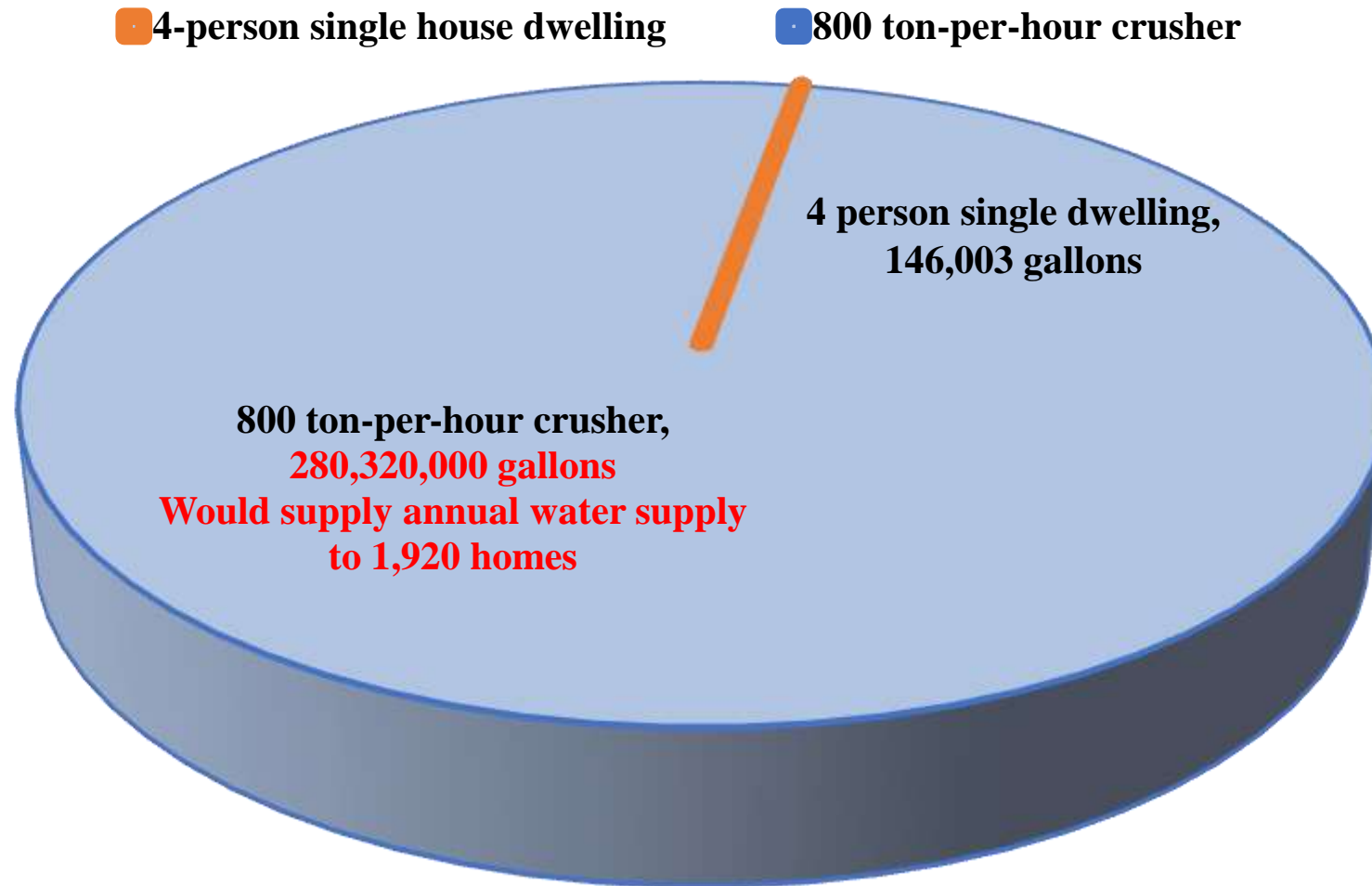
Dust control by water varies from 1-5 GPM by source Aggregate engineering plant plan & climatic cond. Determine total usage and may vary from data presented

Total Annual Water Consumption: 4 Person Residence Versus 800 ton per hour (TPH) Crusher*



Total Annual Water Consumption: 4 Person Residence Versus 800 ton per hour (TPH) Crusher*

Gallon Usage Per Year



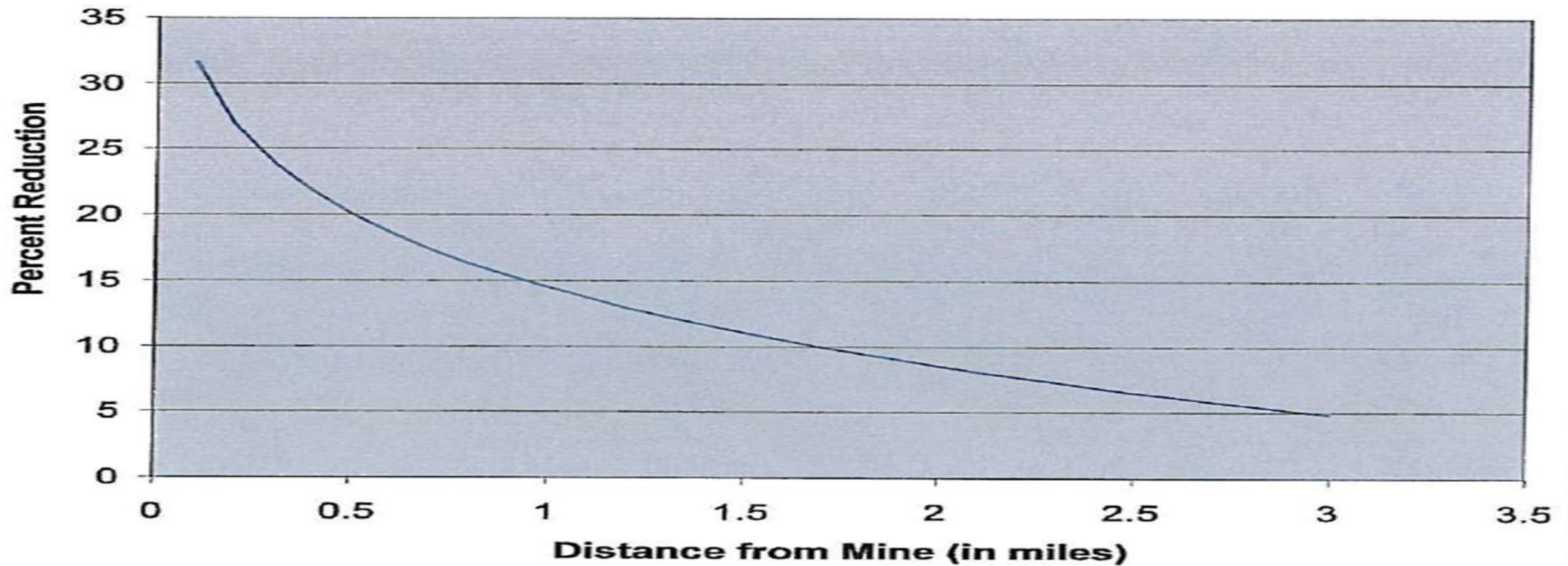
Quarrying Consumes Large Quantities of Water



Primary ways of dust suppression are water and or water and chemical suppressants. This sample suppressant boasts that it only uses 28 liters/minute. That's 7.4 gallons/minute or 3.3 millions gallons a year or 151 swimming pools a year! **TCEQ only monitors air quality from crusher – Water is not a Consideration in an air permit!**

Limestone Quarrying is Predicted to Lower Residential Home Values

**Figure 1: Impact of Gravel Pit on Residential Property Values:
(Percent Reduction by Distance from Mine)**



Limestone Quarrying Requires Heavy Truck Traffic for Hauling

Up to 11 Plant Operations	Estimated Loads/Hr	Estimated Loads/Day	Estimated Loads/Month	Estimated Loads/Year
---------------------------	--------------------	---------------------	-----------------------	----------------------

OVERALL TOTALS

444

5,913

177,390

2,128,680

The Quarry is an IMMINENT DANGER!

The Shape of Things to Come

AFFECTED AREA TODAY

Vulcan Materials

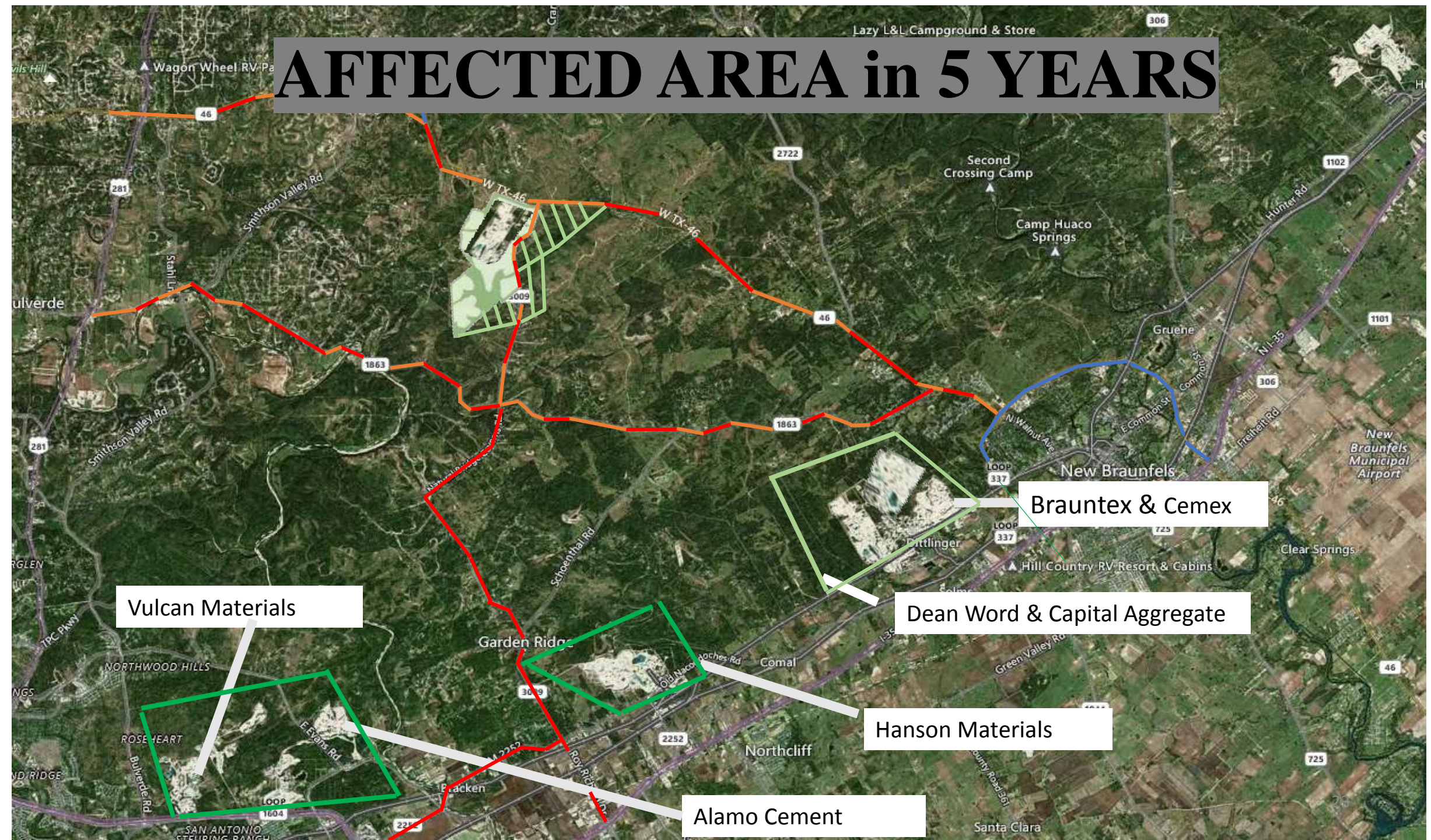
Alamo Cement

Dean Word & Capital Aggregate

Hanson Materials

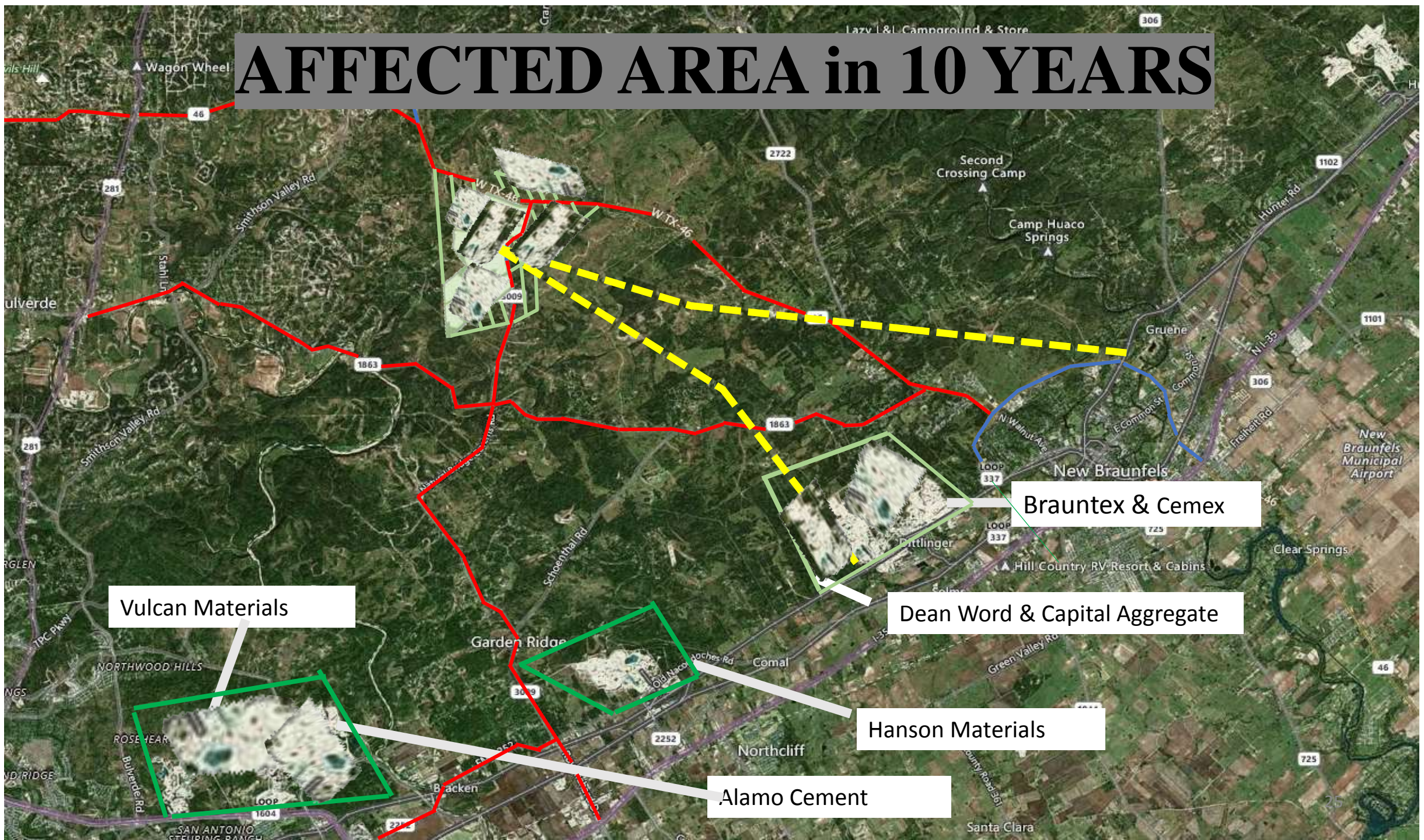
Brauntex & Cemex

AFFECTED AREA in 5 YEARS



An aerial photograph of a region in Central Texas, primarily around New Braunfels and Garden Ridge. A thick red line traces a path across the landscape, connecting several key industrial sites. These sites are highlighted with green outlines and labeled with white callout boxes: 'Vulcan Materials' near Rose Heart, 'Brauntex & Cemex' near Pittlinger, 'Dean Word & Capital Aggregate' near Comal, 'Hanson Materials' near Northcliff, and 'Alamo Cement' near Bracken. The map also shows major roads like Loop 1604, Loop 337, and various state routes (e.g., 46, 1863, 2252). Other landmarks include Camp Huaco Springs, Second Crossing Camp, and the New Braunfels Municipal Airport. A large grey banner at the top reads 'AFFECTED AREA in 8 YEARS'.

AFFECTED AREA in 10 YEARS



AFFECTED AREA in 20 YEARS

Vulcan Materials

Brauntex & Cemex

Dean Word & Capital Aggregate

Hanson Materials

Alamo Cement

Smithson Valley Rd

W TX-46

Loop 1863

Loop 337

Loop 1604

Loop 2252

Loop 725

Loop 46

Loop 1101

Loop 1102

Loop 1103

Loop 1104

Loop 1105

Loop 1106

Loop 1107

Loop 1108

Loop 1109

Loop 1110

Loop 1111

Loop 1112

Loop 1113

Loop 1114

Loop 1115

Loop 1116

Loop 1117

Loop 1118

Loop 1119

Loop 1120

Loop 1121

Loop 1122

Loop 1123

Loop 1124

Loop 1125

Loop 1126

Loop 1127

Loop 1128

Loop 1129

Loop 1130

Loop 1131

Loop 1132

Loop 1133

Loop 1134

Loop 1135

Loop 1136

Loop 1137

Loop 1138

Loop 1139

Loop 1140

Loop 1141

Loop 1142

Loop 1143

Loop 1144

Loop 1145

Loop 1146

Loop 1147

Loop 1148

Loop 1149

Loop 1150

Loop 1151

Loop 1152

Loop 1153

Loop 1154

Loop 1155

Loop 1156

Loop 1157

Loop 1158

Loop 1159

Loop 1160

Loop 1161

Loop 1162

Loop 1163

Loop 1164

Loop 1165

Loop 1166

Loop 1167

Loop 1168

Loop 1169

Loop 1170

Loop 1171

Loop 1172

Loop 1173

Loop 1174

Loop 1175

Loop 1176

Loop 1177

Loop 1178

Loop 1179

Loop 1180

Loop 1181

Loop 1182

Loop 1183

Loop 1184

Loop 1185

Loop 1186

Loop 1187

Loop 1188

Loop 1189

Loop 1190

Loop 1191

Loop 1192

Loop 1193

Loop 1194

Loop 1195

Loop 1196

Loop 1197

Loop 1198

Loop 1199

Loop 1200

Where Are We Now?

- Public commenting period closed 2/27/18.
- The ED will issue a Response to Comments (RTC) along with a Notice of Application and Preliminary Decision (NAPD) and Intent to Obtain Permit
- This NAPD will provide option for a “hearing request” or Contested Case Hearing. If a hearing request is filed timely in Response to this Notice of Receipt of Application and Intent to Obtain Air Permit, the time period for requesting a contested case hearing will be extended to thirty days after the mailing of the executive director’s response to comments.
- Awaiting RTC. Anticipate mid-summer

What's Next?

- Upon issuance of NAPD, applicant must post in local newspaper and everyone who filed comment online and/or spoke at public meeting will receive copy of RTC and NAPD in the mail
- Persons will have '30 days' **only** to file a request for a “Contested Case Hearing” and to be named as an ‘Affected Person’

What's Next? Key Terms

Contested Case Hearing: A request based on issues that were raised by the hearing requester during the comment period, in comments that were not withdrawn later. To help the TCEQ determine the number and scope of issues to be referred to a hearing, the requester should, to the extent possible, specify any of the ED's responses to comments that the requester disputes (and the factual basis of the dispute, and also list any disputed issues of law

Affected Person as an Individual: Rule 55.103 and 55.203

- (1). Give the name, address, and daytime telephone number of the person who files the request..
- (2). In determining whether a person is an affected person, all factors shall be considered, including, but not limited to, the following:
 - a. whether the interest claimed is one protected by the law under which the application will be considered;
 - b. distance restrictions or other limitations imposed by law on the affected interest;
 - c. whether a reasonable relationship exists between the interest claimed and the activity regulated;
 - d. likely impact of the regulated activity on the health and safety of the person, and on the use of property of the person;
 - e. likely impact of the regulated activity on use of the impacted natural resource by the person;
 - f. for a hearing request on an application filed on or after September 1, 2015, whether the requestor timely submitted comments on the application that were not withdrawn;

Affected Party as a group (i.e. GEAA, Friends of Dry Comal Creek). Same as above.

NOW is the Time for a Pre-Emptive Strike By Our Elected Officials!

- **Political Call To Action- Our County, City and ISD's CAN engage in these activities. Do NOT let them tell you otherwise as there is precedent**
 - **Comal County Commissioners**
 - **Write a Resolution NOW asking for a Contested Case Hearing and to be named an affected party**
 - **Work with constituents and Representative Biedermann to write language addressing need for 'local control'**
 - **City of New Braunfels**
 - **Write a Resolution NOW asking for a Contested Case Hearing and to be named an affected party**
 - **Comal ISD**
 - **Write a Resolution NOW asking for a Contested Case Hearing and to be named an affected party**

NOW is the Time for a Pre-Emptive Strike!

- **Contact Your Representatives**
 - **Senator Donna Campbell**
 - **Representative Kyle Biedermann**

OUR QUALITY OF LIFE WONT PROTECT ITSELF!

- **Letters from constituents DEMANDING that they take steps to address this AGGREGATE AND POOR PERMITTING PROCESS locally and within their districts**
 - **Support & assist in writing legislation for & obtaining ‘buy in’ from Commissioners and the Governor for local control. Sign ‘local control’ into legislation NOW.**
 - **Support & assist in bringing the permitting process by TCEQ into question**
 - **Publicly and actively support your constituents by including them in the aforementioned processes**

HOW DO WE MOVE FORWARD LEGALLY?

- **Fundraising**

- **Legal and Expert Representation is NEEDED NOW**

~\$70,000

**Needed to FIGHT this with
Vulcan in a Contested Case
Hearing**